

Christmas Songs for Band Kids

Alto Saxophone

The following is a collection of traditional Christmas hymns and popular songs for band students to play for fun. The songs are in no particular order. The songs are transposed for each instrument so that you can play together with your friends. Have fun!

Jingle Bells

Two staves of musical notation for the song "Jingle Bells". The first staff begins with a treble clef, a key signature of one sharp (F#), and a 4/4 time signature. The melody consists of eighth and quarter notes, with a final whole note. The second staff continues the melody, ending with a double bar line.

Up On The Housetop

Two staves of musical notation for the song "Up On The Housetop". The first staff begins with a treble clef, a key signature of one sharp (F#), and a 4/4 time signature. The melody features eighth and quarter notes. The second staff continues the melody, ending with a double bar line.

Jolly Old St. Nicholas

Two staves of musical notation for the song "Jolly Old St. Nicholas". The first staff begins with a treble clef, a key signature of one sharp (F#), and a 4/4 time signature. The melody is characterized by eighth-note patterns. The second staff continues the melody, ending with a double bar line.

We Wish You A Merry Christmas

Musical notation for the song "We Wish You A Merry Christmas". It consists of two staves of music in 3/4 time. The first staff begins with a treble clef, a key signature of one sharp (F#), and a 3/4 time signature. The melody starts with a quarter rest, followed by a quarter note G4, an eighth note A4, and an eighth note B4. The second staff continues the melody with an eighth note C5, a quarter note D5, an eighth note E5, and an eighth note F#5. The piece concludes with a quarter note G5, a quarter note F#5, and a final whole note G5.

Deck The Hall

Musical notation for the song "Deck The Hall". It consists of three staves of music in 4/4 time. The first staff begins with a treble clef, a key signature of one sharp (F#), and a 4/4 time signature. The melody starts with a quarter note G4, followed by quarter notes A4, B4, and C5. The second staff continues with quarter notes D5, E5, and F#5, followed by a quarter note G5. The third staff concludes the piece with quarter notes F#5, E5, and D5, followed by a quarter note C5 and a final whole note G4.

The First Nowell

Musical notation for the song "The First Nowell". It consists of three staves of music in 3/4 time. The first staff begins with a treble clef, a key signature of one sharp (F#), and a 3/4 time signature. The melody starts with a quarter rest, followed by quarter notes G4, A4, and B4. The second staff continues with quarter notes C5, D5, and E5, followed by quarter notes F#5, G5, and A5. The third staff concludes the piece with quarter notes B5, C6, and D6, followed by quarter notes E6, F#6, and G6, and a final whole note G6.

Go Tell It On The Mountain

verse

The first two staves of the verse are written in 4/4 time. The first staff begins with a treble clef and a 4/4 time signature. The melody consists of quarter and eighth notes, with some beamed eighth notes. The second staff continues the melody with similar rhythmic patterns, including a half note and a quarter note.

chorus

The first two staves of the chorus are written in 4/4 time. The melody is primarily composed of quarter notes, with a few eighth notes. The second staff concludes with a half note and a quarter note, ending with a double bar line and repeat dots.

God Rest Ye Merry, Gentlemen

The first five staves of the piece are written in 4/4 time. The first staff starts with a treble clef and a 4/4 time signature, followed by a whole rest. The melody is composed of quarter notes, with some eighth notes. The second staff continues the melody with quarter notes. The third staff features a mix of quarter and eighth notes. The fourth staff continues with quarter notes and eighth notes. The fifth staff concludes with a quarter note and a whole rest, ending with a double bar line.

Hark The Herlad Angels Sing

Musical score for "Hark The Herlad Angels Sing" in 4/4 time. The score consists of five staves of music. The first staff begins with a treble clef and a 4/4 time signature. The melody is written in a simple, diatonic style, primarily using quarter and eighth notes. The second staff continues the melody with similar rhythmic patterns. The third staff features a more active melodic line with eighth notes. The fourth staff shows a continuation of the melody with some rests. The fifth staff concludes the piece with a final cadence, marked by a double bar line.

Away In A Manger

Musical score for "Away In A Manger" in 3/4 time. The score consists of four staves of music. The first staff begins with a treble clef and a 3/4 time signature. The melody is written in a simple, diatonic style, primarily using quarter and eighth notes. The second staff continues the melody with similar rhythmic patterns. The third staff features a more active melodic line with eighth notes. The fourth staff concludes the piece with a final cadence, marked by a double bar line.

O Little Town Of Bethlehem

Musical score for 'O Little Town Of Bethlehem' in 4/4 time. The score consists of four staves of music. The first staff begins with a whole rest followed by a quarter rest, then a series of quarter notes: G4, A4, B4, C5, B4, A4, G4, F4, E4, D4, C4. The second staff continues with quarter notes: B3, A3, G3, F3, E3, D3, C3, B2, A2, G2, F2, E2, D2, C2. The third staff continues with quarter notes: B1, A1, G1, F1, E1, D1, C1, B0, A0, G0, F0, E0, D0, C0. The fourth staff continues with quarter notes: B0, A0, G0, F0, E0, D0, C0, B0, A0, G0, F0, E0, D0, C0, ending with a double bar line.

Joy To The World

Musical score for 'Joy To The World' in 4/4 time. The score consists of three staves of music. The first staff begins with a key signature of one sharp (F#) and a 4/4 time signature, followed by quarter notes: G4, A4, B4, C5, B4, A4, G4, F4, E4, D4, C4. The second staff continues with quarter notes: B3, A3, G3, F3, E3, D3, C3, B2, A2, G2, F2, E2, D2, C2. The third staff continues with quarter notes: B1, A1, G1, F1, E1, D1, C1, B0, A0, G0, F0, E0, D0, C0, ending with a double bar line.

O Come, O Come, Emmanuel

Musical score for 'O Come, O Come, Emmanuel' in 4/4 time. The score consists of three staves of music. The first staff begins with a whole rest followed by a quarter rest, then a series of quarter notes: G4, A4, B4, C5, B4, A4, G4. The second staff continues with quarter notes: F4, E4, D4, C4, B3, A3, G3, F3, E3, D3, C3, B2, A2, G2. The third staff continues with quarter notes: F2, E2, D2, C2, B1, A1, G1, F1, E1, D1, C1, B0, A0, G0, ending with a double bar line.

O Come All Ye Faithful

Musical score for 'O Come All Ye Faithful' in 4/4 time. The score consists of three staves of music. The first staff begins with a whole rest followed by a quarter rest, then a series of quarter notes: G4, A4, B4, C5, B4, A4, G4. The second staff continues with quarter notes: F4, E4, D4, C4, B3, A3, G3, F3, E3, D3, C3, B2, A2, G2. The third staff continues with quarter notes: F2, E2, D2, C2, B1, A1, G1, F1, E1, D1, C1, B0, A0, G0, ending with a double bar line.

Silent Night

Musical score for 'Silent Night' in G major and 3/4 time. The score consists of three staves of music. The first staff begins with a treble clef, a key signature of one sharp (F#), and a 3/4 time signature. The melody is written in a simple, lyrical style with dotted rhythms and rests.

What Child Is This

Musical score for 'What Child Is This' in G major and 3/4 time. The score consists of four staves of music. The first staff begins with a treble clef, a key signature of one sharp (F#), and a 3/4 time signature. The melody is written in a simple, lyrical style with dotted rhythms and rests.

Angels We Have Heard On High

Musical notation for the first piece, 'Angels We Have Heard On High'. It consists of three staves of music in 4/4 time. The first staff contains the first line of the melody. The second and third staves contain the second line, which features a long, sweeping melisma over the first two measures of the line.

Have Yourself A Merry Little Christmas

Musical notation for the second piece, 'Have Yourself A Merry Little Christmas'. It consists of five staves of music in 4/4 time with a key signature of one sharp (F#). The first four staves contain the main melody, and the fifth staff contains the final line, which ends with a double bar line.

Rudolph The Red Nosed Reindeer

Musical score for 'Rudolph The Red Nosed Reindeer' in G major (one sharp) and 4/4 time. The score consists of four staves of music. The first staff begins with a treble clef, a key signature of one sharp (F#), and a 4/4 time signature. The melody features eighth and quarter notes, with some beamed eighth notes. The second staff continues the melody with similar rhythmic patterns. The third staff shows a change in rhythm with more quarter and eighth notes. The fourth staff concludes the piece with a final cadence.

Rockin Around The Christmas Tree

Musical score for 'Rockin Around The Christmas Tree' in G major (one sharp) and 4/4 time. The score consists of four staves of music. The first staff begins with a treble clef, a key signature of one sharp (F#), and a 4/4 time signature. The melody is characterized by eighth notes and quarter notes, with a prominent eighth-note pattern. The second staff continues the melody with a slight change in rhythm. The third staff shows a change in rhythm with more quarter and eighth notes. The fourth staff concludes the piece with a final cadence.

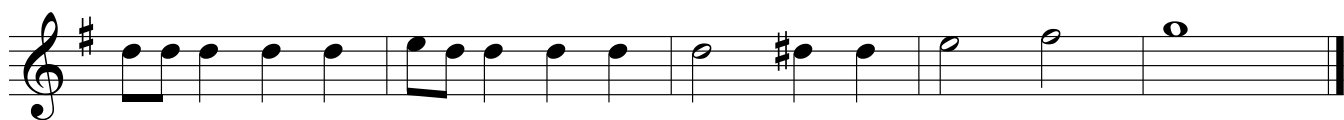
Santa Claus Is Coming To Town

Musical score for 'Santa Claus Is Coming To Town' in G major and 4/4 time. The score consists of four staves. The first staff begins with a treble clef, a key signature of one sharp (F#), and a 4/4 time signature. The melody is characterized by eighth and sixteenth notes, with a prominent dotted quarter note in the first measure. The second staff continues the melody with similar rhythmic patterns. The third staff features a more complex melodic line with many sixteenth notes. The fourth staff concludes the piece with a final cadence.

White Christmas

Musical score for 'White Christmas' in G major. The score consists of four staves. The first staff begins with a treble clef and a key signature of one sharp (F#). The melody is primarily composed of quarter and eighth notes. The second staff continues the melody with a similar rhythmic pattern. The third staff features a more complex melodic line with many sixteenth notes. The fourth staff concludes the piece with a final cadence.

Frosty The Snowman



Let It Snow

The image displays a musical score for the song "Let It Snow" in 4/4 time. The score is written on nine staves, each beginning with a treble clef and a 4/4 time signature. The music is composed of eighth and quarter notes, with some measures containing dotted notes. The key signature is one sharp (F#), indicating the key of D major. The melody is simple and repetitive, characteristic of a classic holiday tune. The score concludes with a double bar line at the end of the ninth staff.