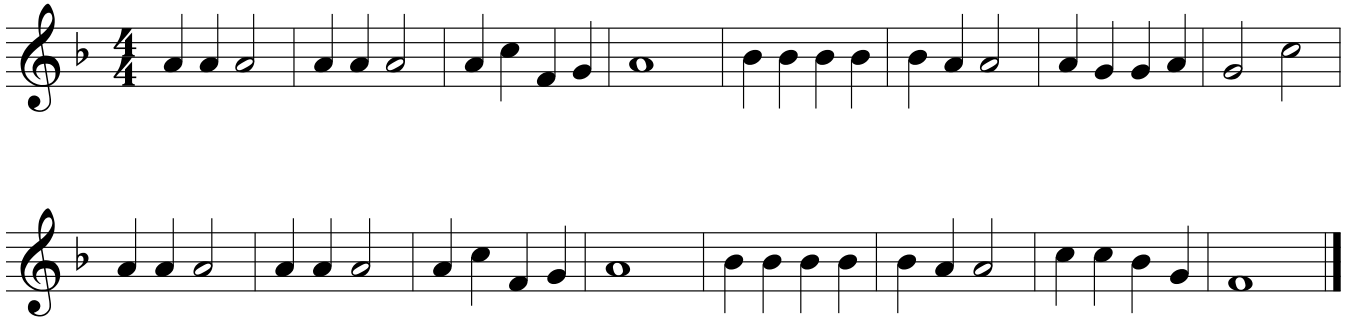


Christmas Songs for Band Kids

E. Horn

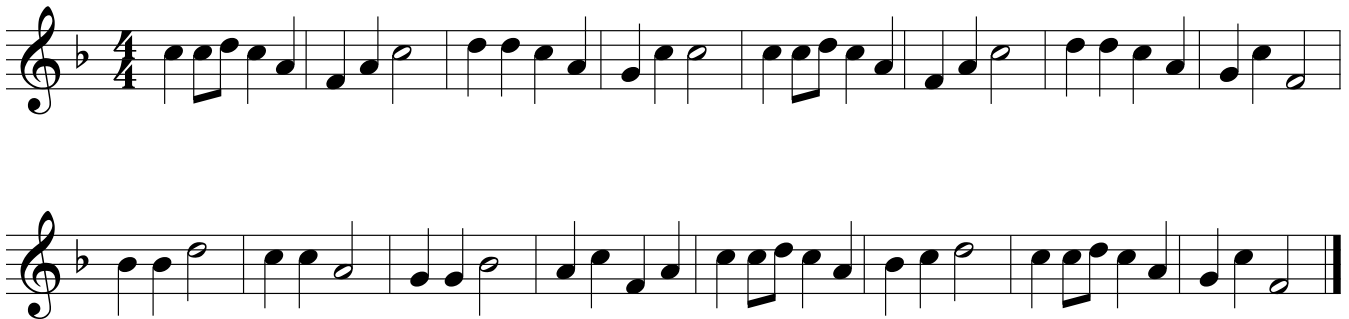
The following is a collection of traditional Christmas hymns and popular songs for band students to play for fun. The songs are in no particular order. The songs are transposed for each instrument so that you can play together with your friends. Have fun!

Jingle Bells



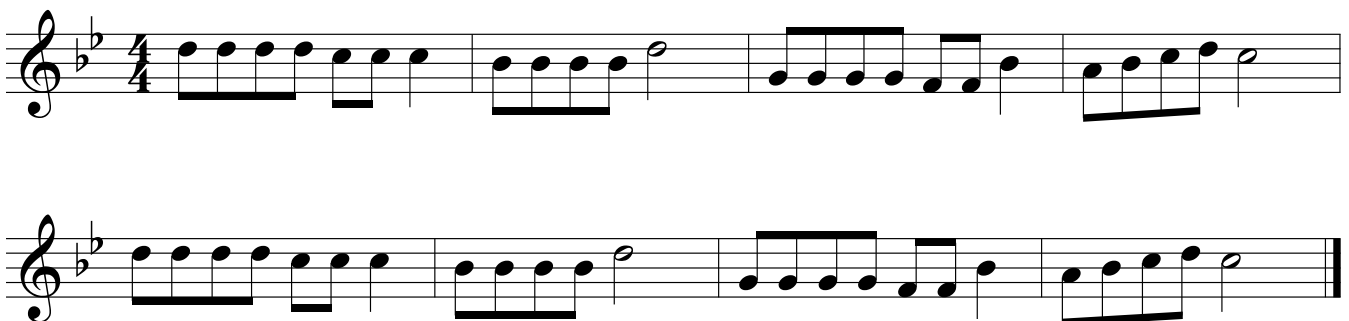
Two staves of musical notation for the song "Jingle Bells". The first staff begins with a treble clef, a key signature of one flat (Bb), and a 4/4 time signature. The melody consists of eighth and quarter notes, with a final whole note. The second staff continues the melody, ending with a double bar line.

Up On The Housetop



Two staves of musical notation for the song "Up On The Housetop". The first staff begins with a treble clef, a key signature of one flat (Bb), and a 4/4 time signature. The melody features eighth and quarter notes. The second staff continues the melody, ending with a double bar line.

Jolly Old St. Nicholas



Two staves of musical notation for the song "Jolly Old St. Nicholas". The first staff begins with a treble clef, a key signature of two flats (Bb and Eb), and a 4/4 time signature. The melody consists of eighth and quarter notes. The second staff continues the melody, ending with a double bar line.

We Wish You A Merry Christmas

Musical notation for the first two staves of 'We Wish You A Merry Christmas'. The first staff begins with a treble clef, a key signature of one flat (Bb), and a 3/4 time signature. The melody starts with two rests, followed by a sequence of notes: G4, A4, Bb4, C5, Bb4, A4, G4, F4, E4, D4, C4. The second staff continues the melody with notes: Bb4, A4, G4, F4, E4, D4, C4, Bb4, A4, G4, F4, E4, D4, C4, ending with a double bar line.

Deck The Hall

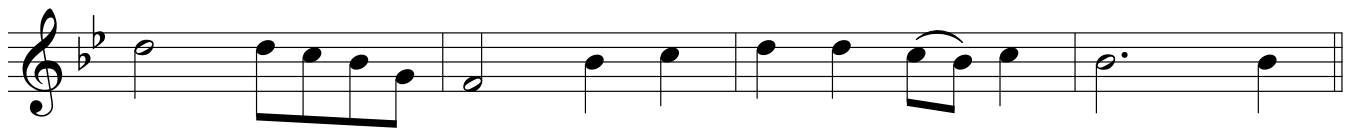
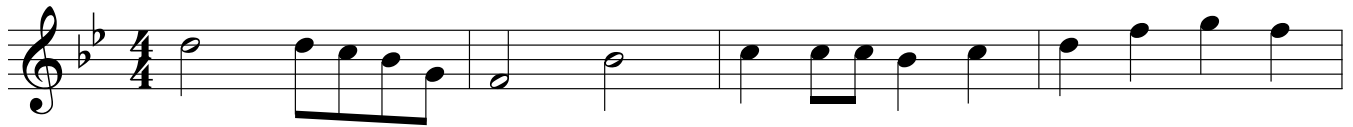
Musical notation for the first three staves of 'Deck The Hall'. The first staff starts with a treble clef, a key signature of one flat (Bb), and a 4/4 time signature. It begins with a repeat sign and contains notes: Bb4, A4, G4, F4, E4, D4, C4, Bb4, A4, G4, F4, E4, D4, C4, Bb4, A4, G4, F4, E4, D4, C4. The second staff continues with notes: Bb4, A4, G4, F4, E4, D4, C4, Bb4, A4, G4, F4, E4, D4, C4, Bb4, A4, G4, F4, E4, D4, C4. The third staff concludes the piece with notes: Bb4, A4, G4, F4, E4, D4, C4, Bb4, A4, G4, F4, E4, D4, C4, ending with a double bar line.

The First Nowell

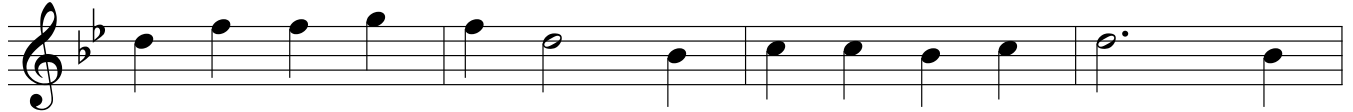
Musical notation for the first three staves of 'The First Nowell'. The first staff starts with a treble clef, a key signature of one flat (Bb), and a 3/4 time signature. It begins with two rests, followed by notes: G4, A4, Bb4, C5, Bb4, A4, G4, F4, E4, D4, C4. The second staff continues with notes: Bb4, A4, G4, F4, E4, D4, C4, Bb4, A4, G4, F4, E4, D4, C4, Bb4, A4, G4, F4, E4, D4, C4. The third staff concludes the piece with notes: Bb4, A4, G4, F4, E4, D4, C4, Bb4, A4, G4, F4, E4, D4, C4, ending with a double bar line.

Go Tell It On The Mountain

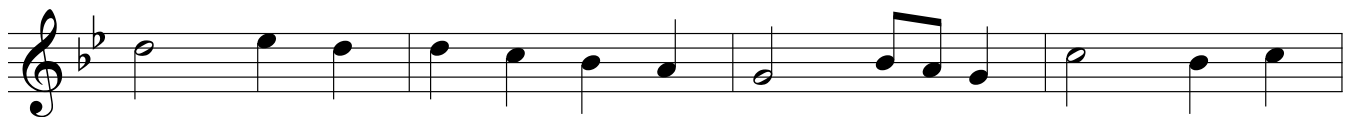
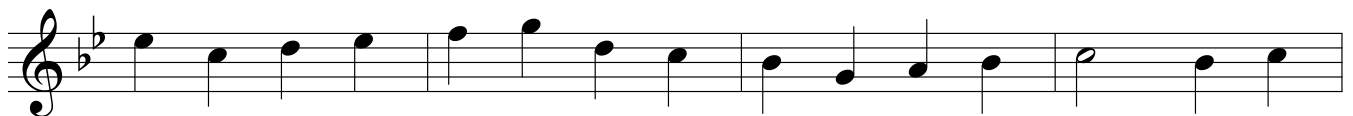
verse



chorus



God Rest Ye Merry, Gentlemen



Hark The Herlad Angels Sing

Musical score for 'Hark The Herlad Angels Sing' in 4/4 time, B-flat major. The score consists of five staves of music. The melody is written in treble clef. The first staff begins with a treble clef, a key signature of two flats (B-flat major), and a 4/4 time signature. The melody consists of quarter and eighth notes, with a final half note. The second staff continues the melody with quarter and eighth notes. The third staff continues with quarter and eighth notes. The fourth staff continues with quarter and eighth notes. The fifth staff concludes the piece with a final half note and a double bar line.

Away In A Manger

Musical score for 'Away In A Manger' in 3/4 time, B-flat major. The score consists of four staves of music. The melody is written in treble clef. The first staff begins with a treble clef, a key signature of two flats (B-flat major), and a 3/4 time signature. The melody starts with two rests, followed by quarter and eighth notes. The second staff continues with quarter and eighth notes. The third staff continues with quarter and eighth notes. The fourth staff concludes the piece with a final half note and a double bar line.

O Little Town Of Bethlehem

Musical score for 'O Little Town Of Bethlehem' in G major, 4/4 time. The score consists of four staves of music. The first staff begins with a whole rest followed by a quarter rest, then the melody. The second and third staves continue the melody. The fourth staff concludes the piece with a final whole note chord.

Joy To The World

Musical score for 'Joy To The World' in G major, 4/4 time. The score consists of three staves of music. The first staff begins with the melody. The second staff features a more active melodic line with many eighth notes and slurs. The third staff continues the melody and concludes with a final whole note chord.

O Come, O Come, Emmanuel

Musical score for 'O Come, O Come, Emmanuel' in G minor, 4/4 time. The score consists of three staves. The first staff begins with a whole rest followed by a quarter rest, then a series of quarter notes: G4, A4, Bb4, C5, Bb4, A4, G4. The second staff continues with quarter notes: F4, E4, D4, C4, Bb4, A4, G4, F4, E4, D4, C4, Bb4, A4, G4, F4, E4, D4, C4, Bb4, A4, G4. The third staff begins with a half note G4, followed by quarter notes: F4, E4, D4, C4, Bb4, A4, G4, F4, E4, D4, C4, Bb4, A4, G4, F4, E4, D4, C4, Bb4, A4, G4, ending with a whole note G4.

O Come All Ye Faithful

Musical score for 'O Come All Ye Faithful' in G minor, 4/4 time. The score consists of three staves. The first staff begins with a whole rest followed by a quarter rest, then a series of quarter notes: G4, A4, Bb4, C5, Bb4, A4, G4. The second staff continues with quarter notes: F4, E4, D4, C4, Bb4, A4, G4, F4, E4, D4, C4, Bb4, A4, G4, F4, E4, D4, C4, Bb4, A4, G4. The third staff begins with quarter notes: G4, A4, Bb4, C5, Bb4, A4, G4, F4, E4, D4, C4, Bb4, A4, G4, F4, E4, D4, C4, Bb4, A4, G4, ending with a whole note G4.

Silent Night

A musical score for the hymn "Silent Night" in 3/4 time, B-flat major. The score consists of three staves of music. The first staff begins with a treble clef, a B-flat key signature, and a 3/4 time signature. The melody starts with a half note B-flat, followed by quarter notes D-flat, E-flat, F, G, A, B-flat, and C. The second staff continues with a half note B-flat, quarter notes D-flat, E-flat, F, G, A, B-flat, and a half note C. The third staff continues with a half note B-flat, quarter notes D-flat, E-flat, F, G, A, B-flat, and a half note C, ending with a double bar line.

What Child Is This

A musical score for the hymn "What Child Is This" in 3/4 time, B-flat major. The score consists of four staves of music. The first staff begins with a treble clef, a B-flat key signature, and a 3/4 time signature. The melody starts with a half rest, followed by quarter notes B-flat, C, D, E, F, G, A, B-flat, C, D, E, F, G, A, B-flat, and C. The second staff continues with a half note B-flat, quarter notes C, D, E, F, G, A, B-flat, and a half note C. The third staff continues with a half note B-flat, quarter notes C, D, E, F, G, A, B-flat, and a half note C. The fourth staff continues with a half note B-flat, quarter notes C, D, E, F, G, A, B-flat, and a half note C, ending with a double bar line.

Angels We Have Heard On High

Musical notation for the first system of 'Angels We Have Heard On High'. It consists of three staves in 4/4 time, key of B-flat major. The first staff contains the main melody with a dotted quarter note on the first measure. The second and third staves feature a descending eighth-note accompaniment line, with the second staff starting with a long slur over the first four measures.

Have Yourself A Merry Little Christmas

Musical notation for the first system of 'Have Yourself A Merry Little Christmas'. It consists of five staves in 4/4 time, key of B-flat major. The first staff contains the main melody. The second, third, and fourth staves feature a descending eighth-note accompaniment line. The fifth staff shows the end of the melody and the beginning of a four-measure rest.

Rudolph The Red Nosed Reindeer



Musical notation for the song "Rudolph The Red Nosed Reindeer". The score consists of four staves of music in 4/4 time, written in the key of B-flat major. The melody is characterized by a steady eighth-note accompaniment and a vocal line that includes a prominent dotted quarter note in the first measure of each staff. The piece concludes with a final whole note chord.

Rockin Around The Christmas Tree



Musical notation for the song "Rockin Around The Christmas Tree". The score consists of four staves of music in 4/4 time, written in the key of B-flat major. The melody features a consistent eighth-note accompaniment and a vocal line with a melodic contour that includes a sharp sign in the fourth measure of each staff. The piece ends with a final whole note chord.

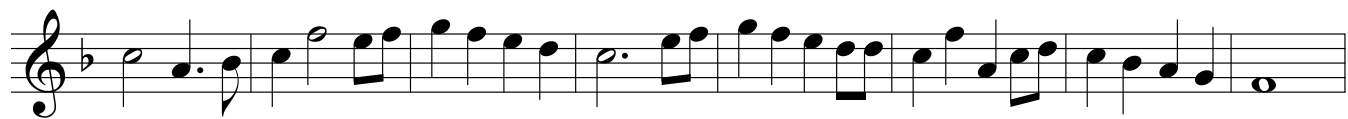
Santa Claus Is Coming To Town

Musical score for 'Santa Claus Is Coming To Town' in 4/4 time, key of B-flat major. The score consists of four staves of music. The first staff begins with a treble clef, a key signature of one flat, and a 4/4 time signature. The melody is characterized by eighth and sixteenth notes, with a prominent eighth-note triplet in the first measure. The second staff continues the melody with similar rhythmic patterns. The third staff features a key signature change to two flats (B-flat major) and includes a sharp sign (#) above a note in the eighth measure. The fourth staff concludes the piece with a double bar line.

White Christmas

Musical score for 'White Christmas' in 4/4 time, key of B-flat major. The score consists of four staves of music. The first staff begins with a treble clef, a key signature of one flat, and a 4/4 time signature. The melody is primarily composed of quarter and eighth notes. The second staff continues the melody with a similar rhythmic pattern. The third staff features a key signature change to two flats (B-flat major) and includes a sharp sign (#) above a note in the second measure. The fourth staff concludes the piece with a double bar line.

Frosty The Snowman



Let It Snow

The image displays a musical score for the song "Let It Snow". The score is written in G minor (one flat) and 4/4 time. It consists of eight staves of music. The melody begins with a quarter rest, followed by a quarter note G4, a quarter note F4, and a quarter note E4. The second staff continues with a quarter note D4, a quarter note C4, a quarter note B3, and a quarter note A3. The third staff continues with a quarter note G3, a quarter note F3, a quarter note E3, and a quarter note D3. The fourth staff continues with a quarter note C3, a quarter note B2, a quarter note A2, and a quarter note G2. The fifth staff continues with a quarter note F2, a quarter note E2, a quarter note D2, and a quarter note C2. The sixth staff continues with a quarter note B1, a quarter note A1, a quarter note G1, and a quarter note F1. The seventh staff continues with a quarter note E1, a quarter note D1, a quarter note C1, and a quarter note B0. The eighth staff concludes with a quarter note A0, a quarter note G0, a quarter note F0, and a quarter note E0. The score is written in a single system with a treble clef and a key signature of one flat.